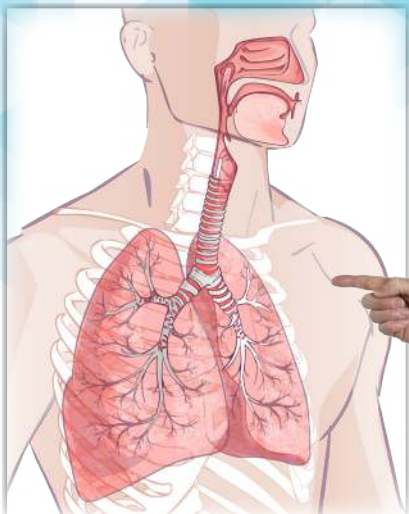


# Alpha Science<sup>™</sup> Laboratories

Your First Choice for Natural Medicine

## Help Prepare for Allergy Season, Naturally



There are natural ways to support the body so that allergy sufferers are more comfortable this allergy season. Alpha Science<sup>™</sup> Laboratories formulas can help by:

### Supporting Lung Health

A detoxification of the lungs is an attempt to rid the body of a buildup of toxins and aid in the efficiency of the organs. Doing a spring detox with **Lung Cleanse<sup>™</sup>** will help strengthen the lungs so that allergy sufferers are better prepared. For maintenance of the lungs between cleanses and for relief of allergy symptoms, **Resp-FX<sup>™</sup>** can support the health of the upper and lower respiratory systems.

### Fighting Free Radicals and Help Improve Cell Health

An overabundance of free radicals in the body slows cell growth and can contribute to ill health. Antioxidants help to slow down the effects of free radicals and help to protect us from disease, early aging and overall health. Natural, botanical supplementations like **Quench-FX<sup>™</sup>** introduces 11 well-known antioxidants, thus supporting tissue and organs from free radical damage. Another option is to supplement **Quercetin** on its own, a bioflavonoid that is a natural anti-histamine and anti-inflammatory. In addition to antioxidants, increasing the intake of B Vitamins in the body with a product like **CoEnzyme B Complex<sup>™</sup>** can also help strengthen cell health.

### Strengthening the Immune System

The immune system is our constant surveillance system, protecting cells from environmental toxins, viruses, bacteria, allergens and tumor growth caused by free radicals. It is a dynamic system comprising of special cells, proteins, tissues, and organs, and it defends us against germs and microorganisms every day. Herbal remedies such as **Super Immune Plus<sup>™</sup>** help to enhance immune system function by activating a number of pathways with a synergistic combination of immune boosting herbs. Modulating the immune system with sterols and sterolins with a product like **Phyto-Immun<sup>™</sup>** will help balance the cells of the immune system to be better prepared for allergy season.

Alpha Science<sup>™</sup> Laboratories  
wants to help you be  
prepared this allergy  
season with these  
unique formulas



ASL-MP-004b

AlphaScienceLabs.com • 1-888-299-0318 • 795 Pharmacy Ave., Toronto, ON M1L 3K2 CANADA



## Lung Cleanse™ NPN 80041649

- ✓ 6 botanical herbs to support pulmonary functions
- ✓ Provides gentle and effective support for the lungs
- ✓ Helps to clear mucus and improve overall respiration
- ✓ Helps to suppress coughing
- ✓ Helps to expel phlegm (expectorant actions)
- ✓ A source of antioxidants for normal lung functions
- ✓ Reduces inflammation of the respiratory system
- ✓ Supports the natural detoxification process for the lungs

**Lung Cleanse™** — supports the normal functions and health of the lungs. This formulation contains traditional Chinese herbs that help dispel wind-heat, and remove damp and toxic heat. The botanical herbs are used to strengthen the lungs' natural healing processes, and are sources of antioxidants that reduce inflammation, which in turn reduce mucus or phlegm.

The primary action of this formula is to increase blood flow in the lung capillaries. It also stimulates the activity of lung macrophages, and acts as an expectorant. These actions combine to dilute, detoxify and drain the lungs of toxins.

### Check out these features and herbs of Lung Cleanse™:

**Baical Skullcap Root (*Scutellaria baicalensis*):** Exerts beneficial effects on various inflammatory conditions; helps to prevent the growth of microbes and supports liver functions; reduces blood lipid levels in adults and supports cardiovascular health; has anti-inflammatory, antioxidant, anti-bacterial, expectorant, anti-allergic properties.

**Chrysanthemum Flower (*Chrysanthemum x morifolium*):** Facilitates digestion, helps in detoxification; helps slow the progression of vision loss; helps to prevent the growth of microbes; protects cardiovascular health, protects cells against damage caused by free radicals; soothes respiratory mucous membranes; has alterative, anti-bacterial, anti-inflammatory, antioxidant, antiviral, carminative and tonic properties.

**Japanese Honeysuckle Flower (*Loniera japonica*):** Exerts beneficial effects on various inflammatory conditions through antioxidants; maintains upper respiratory tract health; helps to prevent the growth of harmful microbes and supports gastrointestinal tract health; supports cardiovascular health; has anti-microbial and anti-inflammatory actions.

**Monk Fruit (*Momordica grosvenori*):** Maintains healthy blood glucose levels and healthy bowel movements through its phytonutrient properties; relieves coughs; used as a sweetener; has anti-histaminic, antioxidant, and hyperglycemic properties.

**Mulberry Leaf (*Morus alba*):** Exerts beneficial effects on various inflammatory conditions; provides antioxidants for the maintenance of health; reduces blood lipid levels in adults and supports cardiovascular health; has anti-bacterial, diuretic, analgesic, and anti-inflammatory actions.

**Rosemary Leaf (*Rosmarinus officinalis*):** Helps relieve flatulence and stomach aches; helps relieve headaches and relaxes muscles and improves mood; provides antioxidants for the maintenance of health; supports the cardiovascular system; has anti-inflammatory, anti-septic, nervine, and diaphoretic actions.



## Resp-FX™ NPN 80041644

- ✓ 13 herbs for pulmonary support
- ✓ Clears mucus and improves overall respiration
- ✓ Provides antioxidants for the lungs
- ✓ Herbs have anti-inflammatory actions
- ✓ Rapid onset of action (menthol)
- ✓ Improves shortness of breath (activity induced)
- ✓ Has expectorant qualities and helps with mild coughing bouts
- ✓ Supports the upper and lower respiratory systems

**Resp-FX™** — contains 13 botanicals based on traditional herbal formulations. These herbs are used to strengthen and support the respiratory's natural healing processes. These 13 botanicals are a source of antioxidants and trace elements that help to reduce inflammation, which in turn reduces mucus or phlegm. Resp-FX™ comes in a cherry menthol flavour.

Resp-FX™ also contains herbs from Lung Cleanse™ which helps cleanse and provides support to the lungs. It is recommended that healthy individuals do a total organ cleanse every six months (usually in spring and fall).

### Check out these features and herbs of Resp-FX™:

**Peppermint Leaf (*Mentha haplocalyx*):** Aids in digestion, helps relieve flatulence, helps relieve nausea and vomiting, and supports digestive system health. Peppermint possesses anti-septic, analgesic, sedative, anti-spasmodic properties and is indicated for asthma, bronchitis, coughs, nasal congestion and nausea.

**Thinleaf Milkwort Root (*Polygala tenuifolia*):** A calming agent that reduces nervousness, distress and irritation. It expels phlegm and relieves congestion, improves appetite, promotes digestion, and improves memory. It has expectorant and anti-hyperglycemic properties.

**Chrysanthemum Flower (*Chrysanthemum x morifolium*):** Facilitates digestion, helps in detoxification, helps slow the progression of vision loss, helps to prevent the growth of microbes, supports cardiovascular health, protects cells against damage caused by free radicals, and soothes respiratory mucous membranes. This herb has alterative, anti-bacterial, anti-inflammatory, antioxidant, anti-viral, carminative and tonic properties.

**Japanese Honeysuckle Flower (*Loniera japonica*):** Exerts beneficial effects on various inflammatory conditions through antioxidants, supports upper respiratory tract health, helps to prevent the growth of harmful microbes, and supports gastrointestinal tract health and cardiovascular health. Japanese Honeysuckle possesses anti-microbial and anti-inflammatory actions.

**Baical Skullcap Root (*Scutellaria baicalensis*):** Exerts beneficial effects on various inflammatory conditions, helps to prevent the growth of microbes and supports the liver. It also reduces blood lipid levels in adults and supports cardiovascular health. Baical Skullcap root possesses anti-inflammatory, antioxidant, anti-bacterial, expectorant, and anti-allergic properties.

**Monk Fruit (*Momordica grosvenori*):** Maintains healthy blood glucose levels and healthy bowel movements through its phytonutrient properties. It also relieves coughs and possesses anti-histaminic, antioxidant, and hyperglycemic properties.

**Thunberg Fritillary Bulb (*Fritillaria thunbergii*):** Expels mucus and helps relieve coughs, helps reduce inflammation of the respiratory tract and supports healthy lung function. It also relieves respiratory congestion and supports respiratory health. This herb also contains anti-inflammatory, antitussive, diuretic and expectorant properties.

**Mulberry Leaf (*Morus alba*):** Exerts beneficial effects on various inflammatory conditions, provides antioxidants for the maintenance of good health, reduces blood lipid levels in adults and supports cardiovascular health. Mulberry also possesses anti-bacterial, diuretic, analgesic, and anti-inflammatory actions.

**Stinging Nettle (*Urtica dioica*):** Helps reduce difficulty in urination associated with the early stages of prostate enlargement. It also helps relieve rheumatic complaints and seasonal allergy symptoms, promotes urination and is a nutritive tonic. It has alterative, diuretic and nutritive properties.

**Rosemary leaf (*Rosmarinus officinalis*):** Helps relieve flatulence, stomach aches, headaches, relaxes muscles and improves mood. It provides antioxidants for the maintenance of good health and supports the cardiovascular system. Rosemary has anti-inflammatory, anti-septic, nervine, and diaphoretic actions.

**Eucalyptus Leaf (*Eucalyptus globulus*):** Supports the respiratory system, helps to expel mucus, relieves cold symptoms, helps to prevent the growth of microbes, exerts beneficial effects on various inflammatory conditions, relieves congestion and makes breathing easier. Eucalyptus possesses anti-inflammatory, anti-septic, anti-spasmodic, and expectorant properties.

**Guar gum (*Cyamops tetragonoloba*):** Aids in weight management and is beneficial for the management of diabetes. It also supports normal cholesterol levels, is a source of soluble fibre, and supports healthy intestinal flora and healthy bowel movements. Guar gum has prebiotic properties.

**Menthol (*Mentha*):** Helps to temporarily relieve mild nasal congestion and cough associated with the common cold.



## Quench-FX™

NPN 80031616

- ✓ Contains 11 types of antioxidants
- ✓ All antioxidants are anti-inflammatory
- ✓ Provides antioxidants for the maintenance of good health
- ✓ Promotes longevity and helps vision health
- ✓ Supports immune and joint health
- ✓ Counteracts oxidative stress
- ✓ Protects tissue and organs from free radical damage
- ✓ Supports cardiovascular pathways
- ✓ Improves insulin sensitivity and glucose tolerance
- ✓ Provides support during allergy season by boosting the immune system

**Quench-FX™** — a unique herbal formulation containing 11 well-known antioxidants for the maintenance of good health by protecting tissue and organs from free radical damage. Used during allergy season to provide support to the immune system. The antioxidants in Quench-FX™ supports most major organs including the liver, eyes, prostate, blood and cardiovascular system. Antioxidants are just one way to combat premature aging.

**Green tea extract (*Camellia sinensis*) (95% Polyphenols):** increases alertness and helps in weight management; helps reduce elevated blood lipid levels and supports cardiovascular health; helps to prevent the growth of microbes; a source of antioxidants for the maintenance of good health; has anti-inflammatory, antioxidant, respirastimulant, and bronchodilating properties.

**Hesperidin:** helps in weight management, increases body heat; protects cells against damage caused by free radicals; has anti-histaminic, anti-spasmodic and digestive actions.

**Turmeric (*Curcuma longa*) (95% Curcumin):** aids in digestion, supports liver functions, helps relieve flatulence; helps increase bile excretion by the liver and contraction of the gallbladder; provides antioxidants for the maintenance of good health; relieves pain and inflammation, assists in healing minor wounds, cuts, burns and minor skin irritations; has anti-inflammatory and hepatic actions.

**R-alpha-Lipoic acid:** provides antioxidants for the maintenance of good health; helps to promote healthy glucose metabolism.

**Tomato extract (*Lycopersicon esculentum*) (5% Lycopene):** supports prostate health; provides antioxidants for the maintenance of health, supports liver functions; reduces blood lipid levels in adults and supports cardiovascular health; has antioxidant, depurative, digestive and vermifuge properties.

**Pine bark extract (95% Proanthocyanidins):** exerts beneficial effects on various inflammatory conditions; helps maintain a healthy immune system; provides antioxidants for the maintenance of health, skin and vision; strengthens blood vessels and supports cardiovascular health; has antioxidant and anti-inflammatory properties.

**Quercetin (*Sophora japonica*):** is an antioxidant; used in herbalism as a capillary/blood vessel protectant; has analgesic, anti-bacterial, anti-septic and laxative properties.

**Lutein (*Tagetes erecta*):** provides antioxidants for the maintenance of good health and eye health; helps to maintain eyesight in conditions such as cataracts and age-related macular degeneration; reduces the risk of developing cataracts; helps to improve macular pigment optical density; has analgesic, anti-bacterial, carminative, stimulant and vermifuge properties.

**Bilberry extract (*Vaccinium myrtillus*):** helps relieve diarrhea; helps relieve symptoms of swelling, heaviness and tingling of the legs due to poor circulation; helps slow the progression of disorders of the eye in conditions such as diabetes, high blood pressure, and macular degeneration; provides antioxidants for the maintenance of good health and supports eye health; has anti-inflammatory, antioxidant, anti-viral, anti-spasmodic and immunostimulant actions.

**Grape seed extract (*Vitis vinifera*) (95% Proanthocyanidins):** beneficial for a number of cardiovascular conditions; helps with poor circulation and can help with high cholesterol levels; reduces swelling and helps with eye conditions related to diabetes; contains antioxidants to help maintain good health; has anti-allergic, anti-inflammatory, antioxidant and anti-asthmatic properties.

**Red wine extract (*Vitis vinifera*) (50% Polyphenols):** helps relieve symptoms of swelling, heaviness and tingling of the legs due to poor circulation; source of antioxidants for the maintenance of good health; supports cardiovascular health; has antioxidant and anti-inflammatory properties.



## Quercetin

NPN 80036768

- ✓ A bioflavonoid which is an antioxidant
- ✓ Derived from a flower bud, *Sophora japonica*
- ✓ Antioxidants reduce inflammation
- ✓ Used for seasonal allergies
- ✓ Recommended for general well-being
- ✓ Supports normal respiratory health
- ✓ Aids cardiovascular health
- ✓ Promotes balanced blood pressure
- ✓ Offers protection against oxidative stress

**Quercetin** — Quercetin dihydrate is derived from a flower bud called *sophora japonica*. It is an antioxidant and is one of the most biologically active flavonoids to support optimal health that is also a natural anti-histamine, and anti-inflammatory. It may expel phlegm and arrest coughing; is used for seasonal allergies and is recommended for general well-being. Quercetin has been used to support normal respiratory health as it offers support against oxidative stress. It has also been used in herbalism as a capillary/blood vessel protectant and exhibits analgesic, antibacterial and antiseptic properties.

ASL uses Quercetin dihydrate which is derived from a flower bud called *Sophora japonica* and is one of the most biologically active flavonoids to support optimal health.



## CoEnzyme B Complex™

NPN 80084385

- ✓ An enhanced, metabolic, vitamin B complex
- ✓ Contains water-soluble vitamins that are fortified with antioxidants and trace minerals
- ✓ For energy balance and metabolism
- ✓ Introduces a complex of B vitamins in their intermediate forms which help increase absorption

**CoEnzyme B Complex™** — introduces a complex of B vitamins in their intermediate forms, which has the benefits of increased absorption and utilization. Vitamins B1, B2, B5, B6, B12 and biotin, all help the body to metabolize carbohydrates, proteins and fats. Additionally, vitamin B1 helps with normal growth; vitamins B2, B5 and B6 help in tissue formation; and vitamin B12 helps to form red blood cells. Vitamin B3, Inositol and Silica are sources of vitamins/minerals, are a factor in the maintenance of good health, they help in normal growth and development, and support biological functions. Choline bitartrate helps to support liver functions, and is a factor in the maintenance of good health. Folic acid helps the body to metabolize proteins and helps to form red blood cells. PABA (Para-Aminobenzoic acid) serves as a non-essential nutrient found in liver, whole grains, molasses, mushrooms, brewer's yeast and spinach. R-Alpha Lipoic Acid provides antioxidants for the maintenance of good health, helps to promote healthy glucose metabolism and helps cells produce energy.



## Super Immune Plus™ NPN 80043118

- ✓ Relief from the cold and flu
- ✓ Rejuvenates the immune pathways
- ✓ Enhances the natural defence system
- ✓ Herbs have adaptogenic properties
- ✓ A rejuvenating tonic for physical stress
- ✓ Antioxidants have anti-inflammatory actions
- ✓ Herbs have anti-bacterial and anti-viral properties

**Super Immune Plus™**— helps to enhance immune system function by activating a number of pathways with a synergistic combination of ingredients. It also contains restorative herbs to help build back the body's normal energy.

### Check out these features and herbs of Super Immune Plus™:

**Ashwagandha (*Withania somnifera*)** is traditionally used as a rejuvenating tonic to help relieve general weakness, especially during recovery times. It can help reduce cortisol levels which reduces stress and anxiety. Thus, it can help the body to cope better both physically and mentally with stress. It has a strong adaptogenic action that works synergistically to enhance the restorative effects of Astragalus and Siberian ginseng. Ashwagandha has adaptogenic, analgesic, antibiotic, antioxidant, cardioprotective, and diuretic properties.

**Astragalus (*Astragalus membranaceus*)** is known to stimulate the immune system through its antioxidant actions towards inflammatory conditions. Antioxidants help to protect the cells against damage caused by free radicals. It is used for prevention and supports the body from various stressors. It is a rejuvenating tonic to the liver and helps maintain a healthy immune system. This may help the body to cope better both physically and mentally. Astragalus has adaptogenic, antioxidant, digestive, diuretic, immunostimulant, nervine and tonic properties.

**Echinacea (*Echinacea angustifolia*)** is commonly used for colds, the flu, sore throats and relieves symptoms of upper respiratory tract infections. It boosts the immune system directly due to a number of active chemicals like polysaccharides, alkylamides, flavonoids, polyacetylenes and essential oils. For example, arabinogalactan is a very powerful immunomodulating polysaccharide and is effective in activating macrophages, interleukin and interferon with an increase in T-cell activity. It can boost the immune system to attack and kill microbial actions, thus echinacea is effective in stimulating the immune pathways. Echinacea has anti-inflammatory, anti-microbial, anti-septic, diaphoretic, immunomodulating, stimulant, and diuretic properties.

**Cat's Claw (*Uncaria tomentosa*)** provides antioxidants and trace nutrients which may have beneficial effects on various inflammatory conditions. It helps to prevent the growth of microbial actions, thus supporting the gastrointestinal tract which in turn supports the immune system and our overall health. Cat's claw is known to stimulate the natural killer T-cells and interleukin immune defense system. Cat's claw possesses anti-inflammatory, antioxidant, anti-bacterial and anti-viral properties.

**Eleuthero root/Siberian ginseng (*Eleutherococcus senticosus*)** is traditionally used to prevent colds, the flu, and to increase normal energy levels, longevity, and vitality. It is one of the best adaptogenic herbs to help the body cope better with either mental or physical stress. It can increase the body's abilities to resist and endure physical, normal body chemical responses (cortisol) and psychological stress. Thus, it can enhance stamina, increase resistance to infections and accelerate recovery. Siberian ginseng has adaptogenic, anti-inflammatory, antioxidant, immunogenic, nervine and stimulant properties.

**Reishi Mushroom (*Ganoderma lucidum*)** has traditionally been used to dispel phlegm, stops coughs and arrests wheezing by supporting the immune pathways through its anti-inflammatory actions. It is known as a liver tonic and may promote appetite. Its nutrients and trace elements provide antioxidants to maintain better health. Reishi mushroom enhances the T-lymphocyte activity thus boosting the immune system. Reishi mushroom has adaptogenic, anti-allergic, anti-inflammatory, anti-microbial, antioxidant and immune stimulant properties.

**Aloe Vera** is a source of antioxidants and helps support the immune system. This herb exerts beneficial effects on various types of inflammatory conditions, helps maintain healthy blood sugar levels, and promotes bowel movement. It also regenerates cells and speeds up the healing process, while soothing the skin. Aloe vera has anti-aging, anti-inflammatory, stimulant, stomachic, and tonic properties.



## Phyto-Immune™ NPN 80085278

- ✓ Contains both phytosterols and sterolins
- ✓ Support for the immune system

**Phyto-Immune™**— is a phytosterol immune modulating formula containing both sterols and sterolins that help balance the cells of the immune system. It strengthens an under-active immune system, and at the same time, turn off an overactive immune system. By enhancing only the function of the TH-1 cells and not the TH-2 helper cells, phytosterols/sterolins may provide that crucial balance.

Helper cells are divided into two types: Type TH-1 and Type TH-2. These cells must remain in a delicate balance at all times for the body to remain healthy. TH-1 cells control the TH-2 (Type 2 helper) cells, which can over stimulate B-cell activity. Too many B-cells (or antibodies) can cause an autoimmune reaction. Uncontrolled over activity of B-cells is thought to be responsible for debilitating or chronic autoimmune disorders such as rheumatoid arthritis, allergies, and asthma. Phyto-Immune™ is indicated for these conditions, as well as for the treatment of gastric ulcers, high cholesterol, chronic inflammation and benign prostate hypertrophy (BPH). Research has shown that a mixture of sterols and sterolins in a ratio of approximately 80:1 is more effective than either sterol alone.

Visit [alphascienelabs.com](http://alphascienelabs.com)  
for Monographs on:  
**Lung Cleanse™**  
**Quench-FX™**

